

Pepsi's Dishes

Satellite DXers are a rather new species in China. One of the select few is Pepsi in the city of Mengyang of Sichuan province in south-western China. Why would anybody choose the nickname Pepsi, you may ask? Well, that's not difficult to guess: Pepsi used to work for the company by the same name.

■ Where does the DXer live? Easy to guess, it's the building on which antennas can even be seen from the street below. Pepsi's apartment is in this mixed residential and business block, because here he can freely install antennas on the roof.

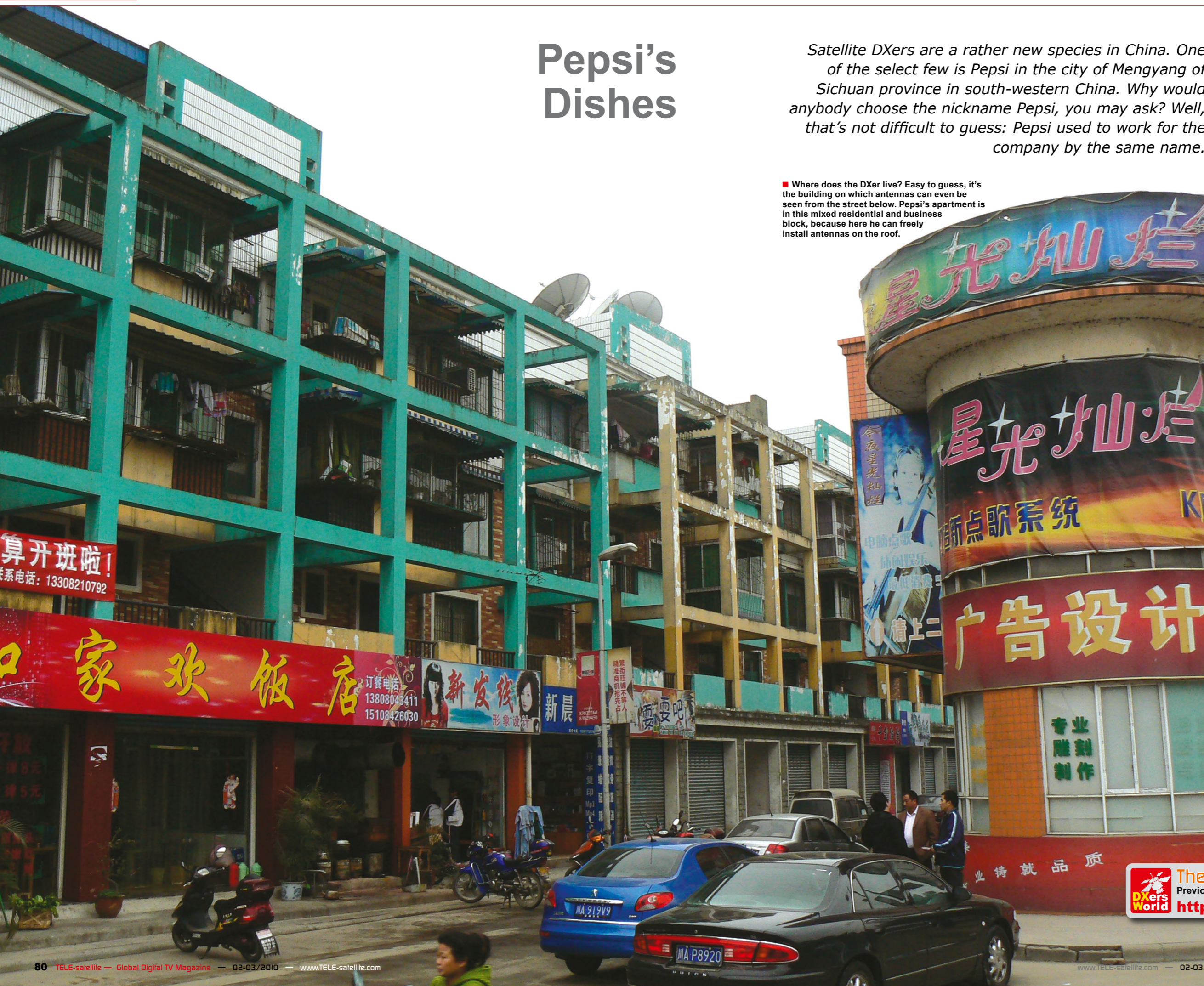
He has since moved on and now holds a technician's positions at a local packaging company, even though he still sticks to his nickname. We meet Pepsi for lunch at a typical restaurant in his hometown and he tells us how it all began: "I started out in 2004 with a 1.5 m dish which I used to pick up signals from ASIATAT 3 at 105.5° East." It was technology rather than content that got him hooked on this hobby. "I hardly ever watch TV," Pepsi admits, "it's rather the challenge of trying to receive even more satellites that keeps me going." This enthusiasm led to an increasing number of satellite dishes over the years. Next to several small dishes with diameters ranging from 45 to 90 cm Pepsi also uses 1.8 and 2.4 m antennas.

With great expectations and anticipation we take the trip to Pepsi's place in a residential area of the city of Mengyang, some 40 km north of the capital of Sichuan province. Pepsi's apartment is located on the second floor of the building and it becomes evident right upon entering that watching TV is not exactly Pepsi's favourite pastime. Only one TV set can be seen in the living room, but a total of six receivers. Pepsi loves the technical aspects of satellite television, yet could hardly care less about what kind of content is transmitted.

All of his antennas are mounted on the roof of the building's staircase. "Here they don't get in the way of anybody, and nobody gets in my way," Pepsi explains. As a matter of fact, he purposely moved into this area so that he would be able to pursue his hobby without restrictions. "Where I used to live before it was not possible to install large antennas," says Pepsi. "It was my hobby that made me move to Mengyang." Talk about commitment!

Pepsi even spends his spare time helping other people install their satellite dishes and he has become a well-established satellite expert even beyond his city.

Eventually, his hobby might turn into his profession one day. "I am currently working on larger projects too, which involve supplying several apartments



 **The World of Satellite DXers**
 Previous TELE-satellite DXer Reports can be Read Here:
<http://www.SatcoDX.net>

■ Pepsi on his way up to the roof of the staircase. The 1.8 m dish points at THAICOM.



with satellite television." It looks like Pepsi will soon be able to make money out of his hobby, for which we wish him good luck.



■ Using an extension rail Pepsi has converted his 2.4 m antenna into a multi-feed dish for reception of nine different satellites.



■ Pepsi presenting his receiver collection in the living room.